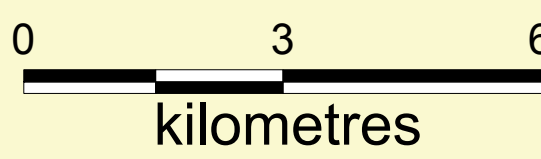
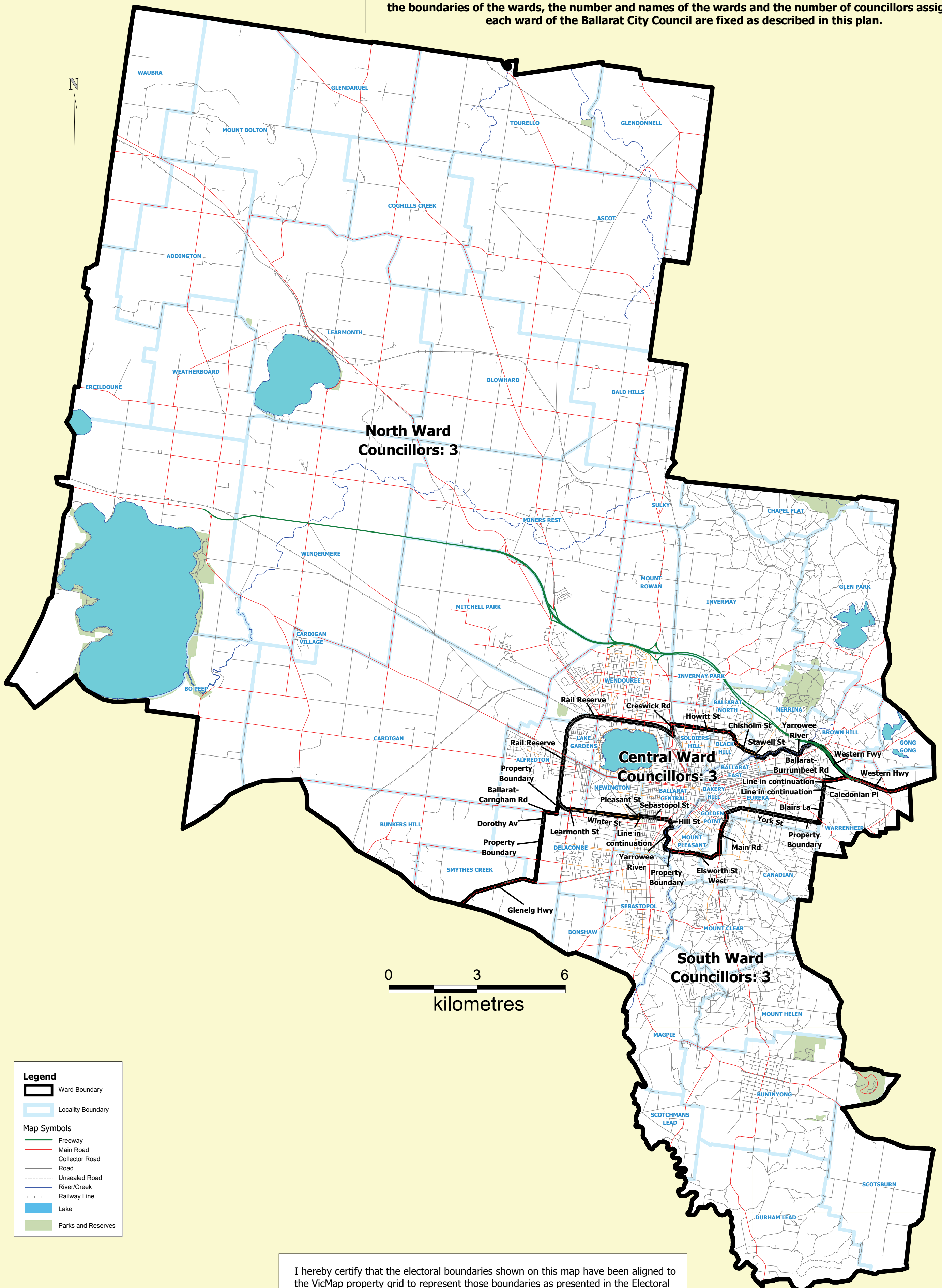


ELECTORAL STRUCTURE OF BALLARAT CITY COUNCIL

NOTE: By Order in Council made under Section 220Q(k), (l), (m) and (n) of the Local Government Act 1989, the boundaries of the wards, the number and names of the wards and the number of councillors assigned to each ward of the Ballarat City Council are fixed as described in this plan.



Legend

- Ward Boundary
- Locality Boundary

Map Symbols

- Freeway
- Main Road
- Collector Road
- Road
- Unsealed Road
- River/Creek
- Railway Line
- Lake
- Parks and Reserves

I hereby certify that the electoral boundaries shown on this map have been aligned to the VicMap property grid to represent those boundaries as presented in the Electoral Representation Review Final Report for Ballarat City Council, submitted to the Minister for Local Government on 13 August, 2007.

Steven Tully, Electoral Commissioner

Electoral Structure of
Ballarat City Council
LEGL./07-312